

String Pinsetter Initial Setup and Adjustments Instructions

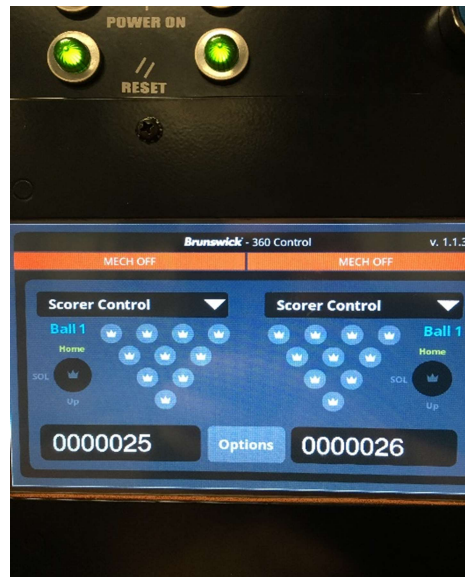
Please follow these steps to successfully complete the string pinsetter installation and adjustments.



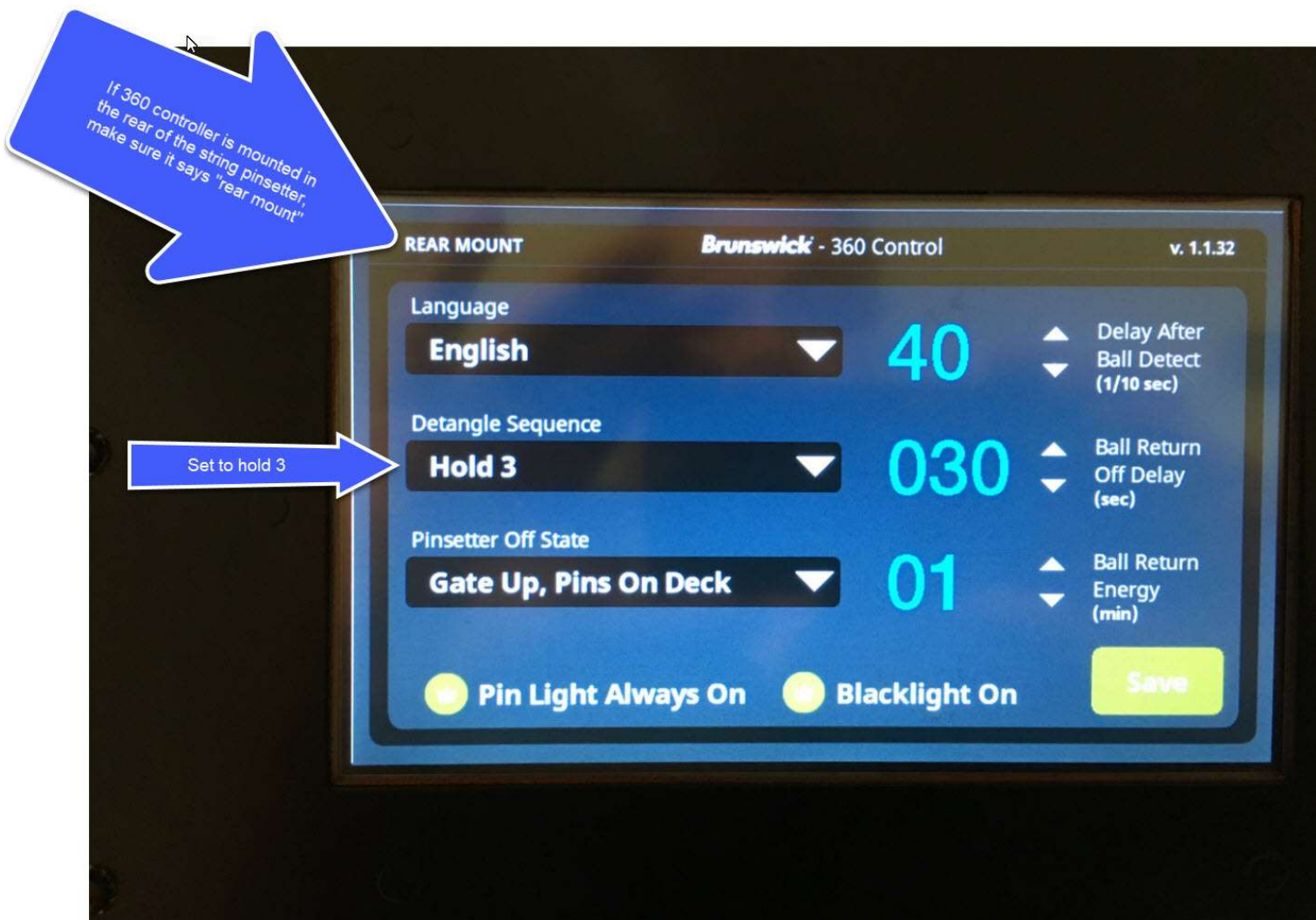
1. Double check that all the emergency stop buttons are not pressed and both are released.



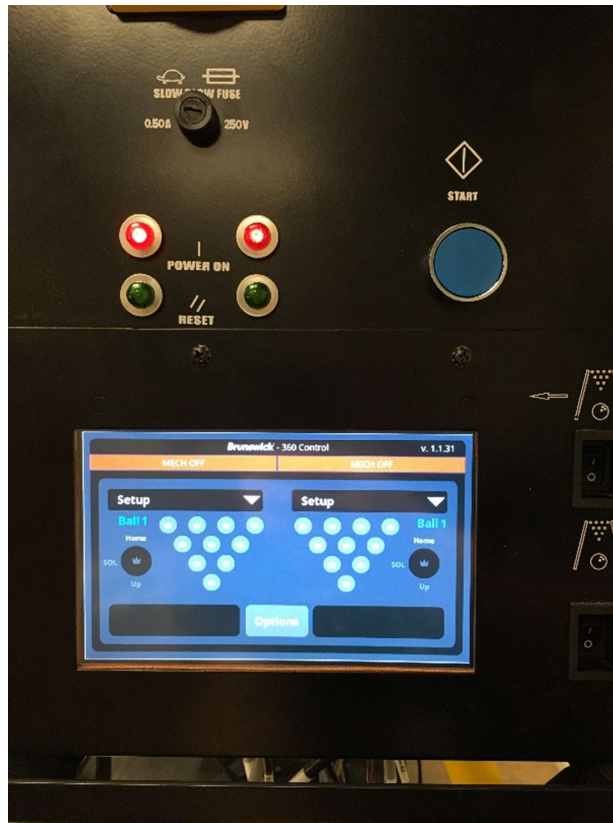
2. Turn OFF both Run/Stop switches before powering up the 360 controller main switch.



3. After Applying power make sure the two green lights are on indicating the machine is ready to start. If you do not have the two green lights on, please check the emergency stop buttons and check their connections.



4. Press the Options button on the screen confirm that the above information is correct on your screen and make any necessary adjustments if needed. Press the Save button.



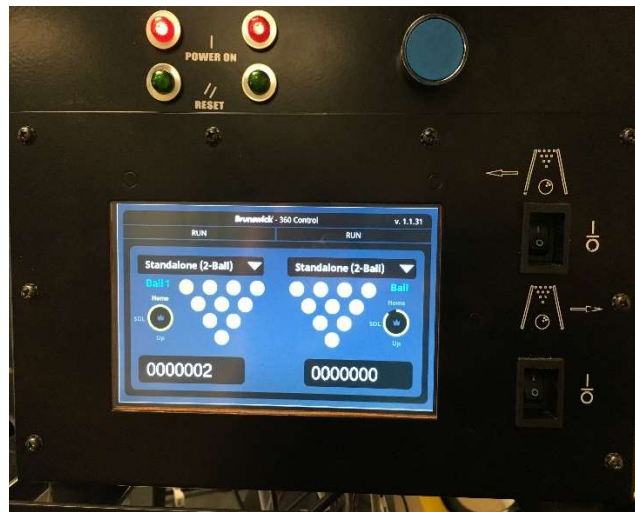
5. Press The blue START button and notice that the status light will switch from green to Red. Switch to SETUP at the 360-controller display and turn both Run/Stop switches into the Run position.



6. Check on both string machines if the string motion wagon stops at the 'Stop Dogs'.



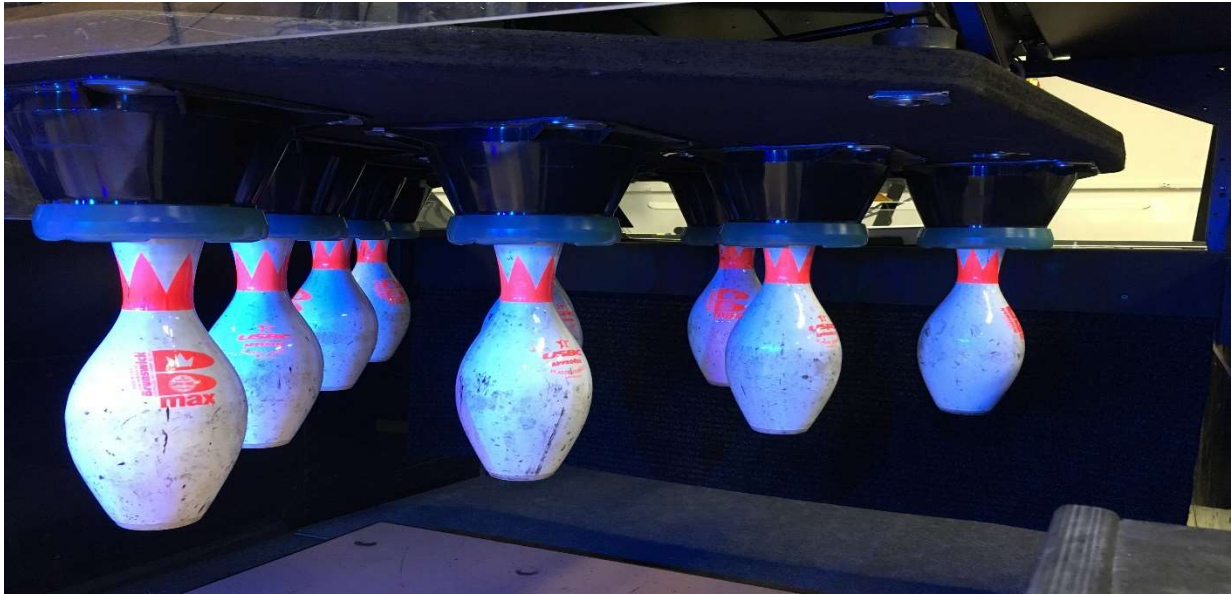
7. Check the string tension by pulling the string to the Arrow direction ensuring that the pin is all the up into the centering cone. Adjust the string reels if needed.



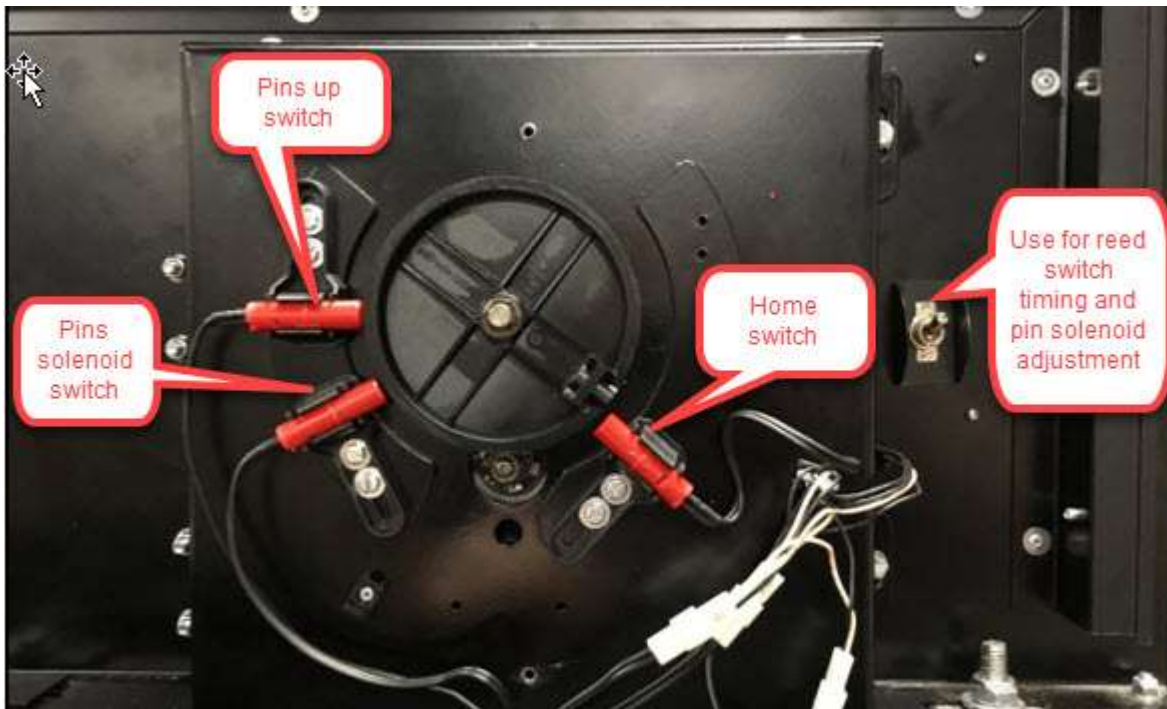
8. At the 360 Controller, turn off both Run/Stop switches and choose from the drop-down menu 'Standalone (2-ball)'. Turn the Run / Stop switches to Run.



9. Press in the middle of the pin rack display and a pin stop option screen will open. Select NONE and then press Set Pins on the right-side menu options.



10. Pin solenoid switch will activate the breaks. Notice that the pins are too low in the above picture. Pins 4 to 10 should be showing just the bottom part of the pin crown only.



11. To raise the pins to the desired height you will need to adjust the Pins Solenoid switch only. Moving the switch away from the Pins Up switch will lower the pins more. Moving the switch closer to the Pins Up switch will raise the pins. PLEASE MAKE THIS AJUSTMENT MOVING THE REED SWITCH BRACKET IN SMALL INCREMENTS 2MM INCREMENTS TOP. Use the On/Off switch next to the switch cluster to inspect the adjustment.



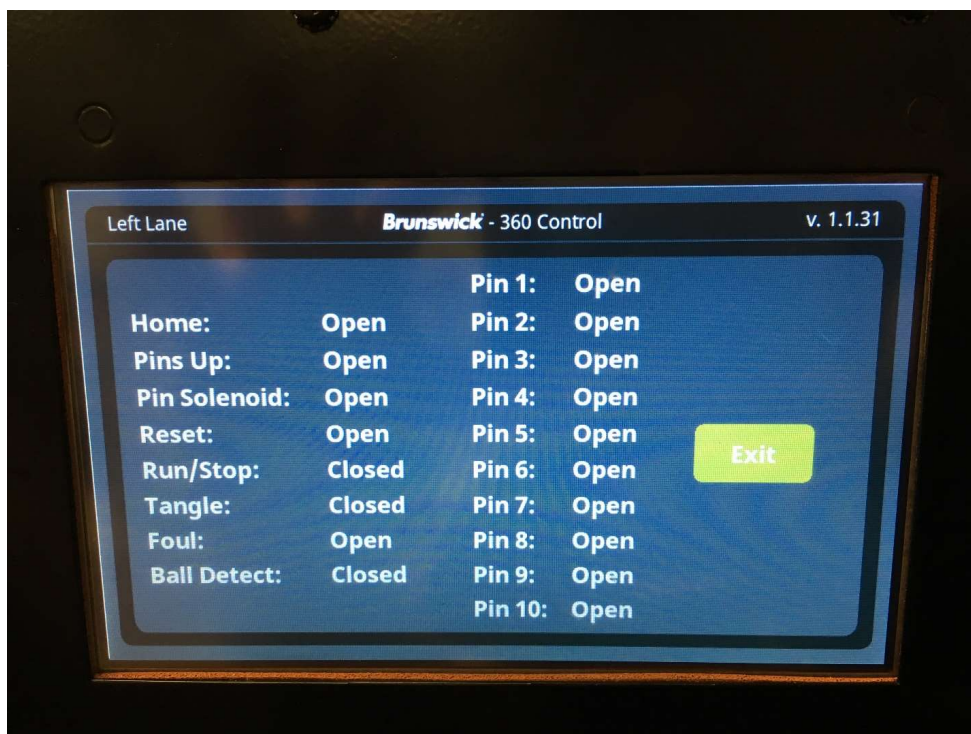
12. The above picture shows the way the pins should look like. Notice Pins 1,2 and 3 will always look lower than the rest of the Pins.



13. After you complete the string brake setup, select Diagnostics from the drop-down menu on both machines and turn them on. Inspect the pinsetters functionality. It should initially set a full rack and then spot pins by pin number order one by one.



14. Press the Switch Cluster icon to display the switch functions.



15. You can observe the switch functions in this screen while the machine is cycling. Also, you can test the Pins Motion Interface 'Spics' moving each magnet toward the reed switch. You can now view if the switch for the pin you're testing will switch from Open to Close.

16. After completing all these steps, the string machines are ready for normal operation. Turn off both machines and choose Scorer control from the drop-down menu. Turn the switch on and the machines are ready for operation.